

# FRANKLIN COURT

1099 14th Street, NW  
Washington, DC 20005

## Welcome to Franklin Court

- › 117,868 SF contiguous on top three floors
- › 13,281 SF available on 8th floor / can be subdivided
- › Flexible 41,000 sf floorplates with 30' x 30' column spacing
- › 9' finished ceiling heights and 4 sides of glass
- › LEED Gold
- › One block to Metro
- › State-of-the-art fitness center with full-swing golf simulator
- › New coffee bar in lobby
- › Magnificent rooftop terrace
- › Bicycle storage room
- › 4-levels of underground parking: 1/1,000 psf
- › DAS cell phone repeater provides service throughout the building
- › Home of the Washington Design Center
- › Spec Suites coming 1Q 2018

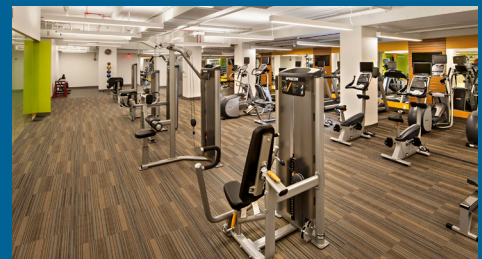
[franklincourt.com](http://franklincourt.com)

### For Leasing Information

JOHN MARVIN JONES  
202.513.6709  
[jmjones@lpc.com](mailto:jmjones@lpc.com)

ADAM BIBERAJ  
202.513.6736  
[abiberaj@lpc.com](mailto:abiberaj@lpc.com)

ELAINE CLANCY  
202.513.6721  
[eclancy@lpc.com](mailto:eclancy@lpc.com)

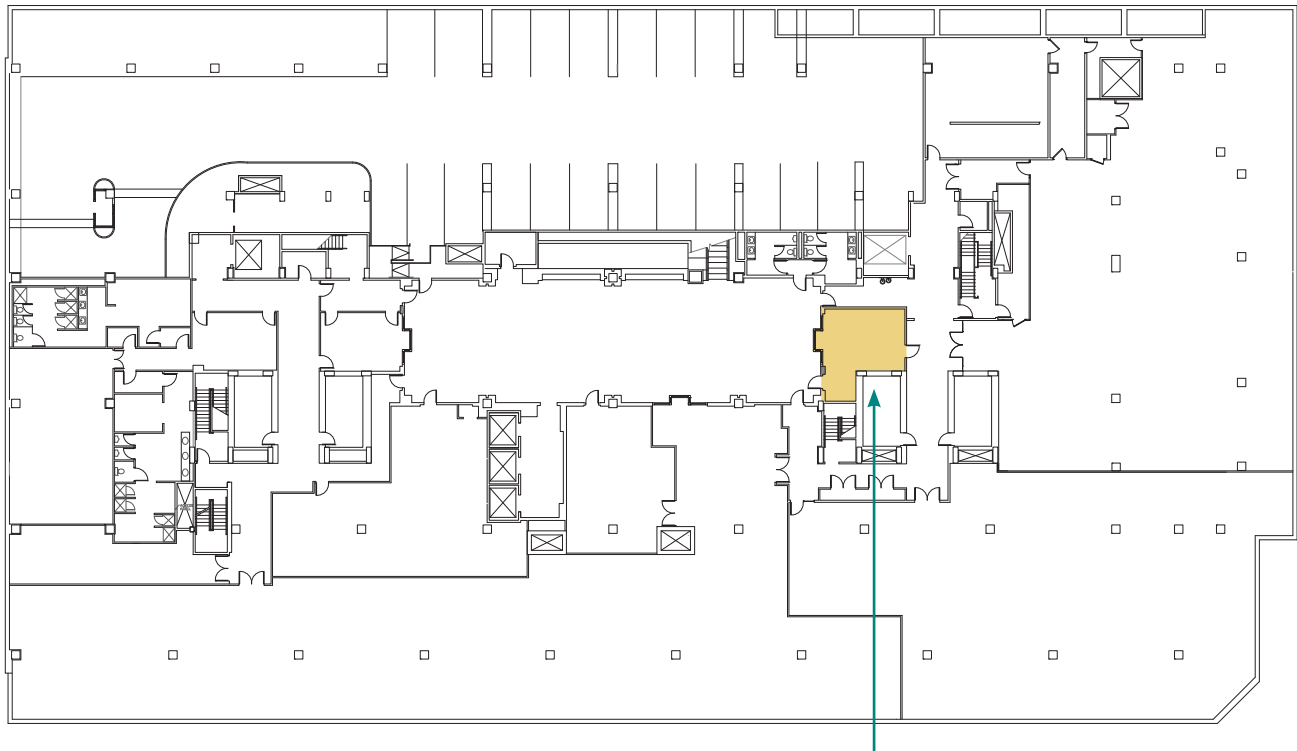


LINCOLN  
PROPERTY  
COMPANY

[lpcwashingtondc.com](http://lpcwashingtondc.com)

# Concourse Level

1099 14th Street, NW  
Washington, DC 20005



14TH STREET, NW

L STREET, NW

440 SF AVAILABLE:  
IMMEDIATELY

Floor	Suite	Sq. Ft.	Rate	Occupancy
Concourse	-	440	\$35.00 - \$38.00 FS	Vacant

For Leasing Information

JOHN MARVIN JONES  
202.513.6709  
jmjones@lpc.com

ADAM BIBERAJ  
202.513.6736  
abiberaj@lpc.com

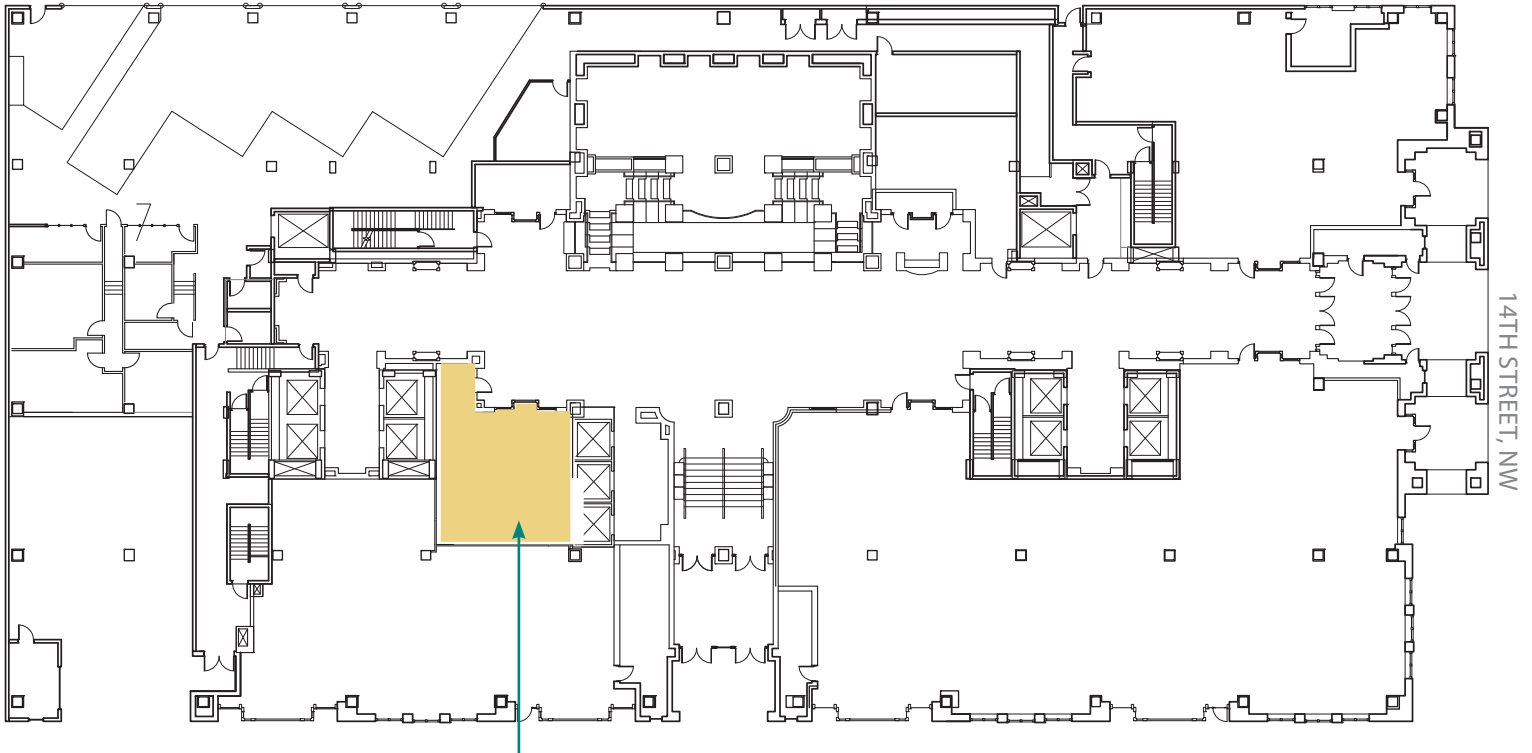
ELAINE CLANCY  
202.513.6721  
eclancy@lpc.com

LINCOLN  
PROPERTY  
COMPANY

FRANKLIN  
COURT

# First Floor

1099 14th Street, NW  
Washington, DC 20005



943 SF AVAILABLE: L STREET, NW  
IMMEDIATELY

Floor	Suite	Sq. Ft.	Rate	Occupancy
1st	300L	943	\$42.00 - \$44.00 FS	Vacant

## For Leasing Information

JOHN MARVIN JONES  
202.513.6709  
jmjones@lpc.com

ADAM BIBERAJ  
202.513.6736  
abiberaj@lpc.com

ELAINE CLANCY  
202.513.6721  
eclancy@lpc.com

LINCOLN  
PROPERTY  
COMPANY

FRANKLIN  
COURT

# Fifth Floor

1099 14th Street, NW  
Washington, DC 20005



Floor	Suite	Sq. Ft.	Rate	Occupancy
5th		41,547	\$56.00-\$59.00/FS	Vacant

#### For Leasing Information

JOHN MARVIN JONES  
202.513.6709  
jmjones@lpc.com

ADAM BIBERAJ  
202.513.6736  
abiberaj@lpc.com

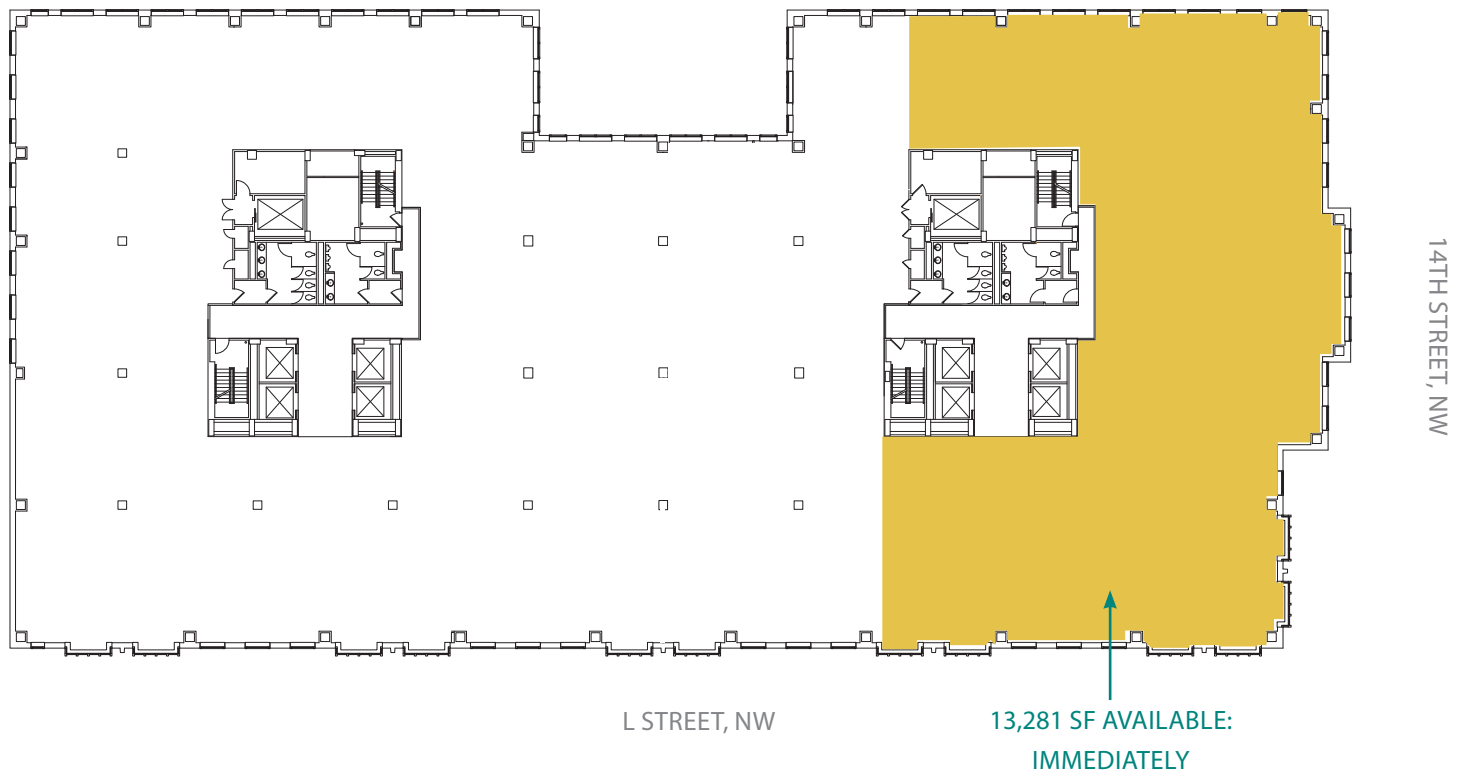
ELAINE CLANCY  
202.513.6721  
eclancy@lpc.com

LINCOLN  
PROPERTY  
COMPANY

FRANKLIN  
COURT

# Eighth Floor

1099 14th Street, NW  
Washington, DC 20005



Floor	Suite	Sq. Ft.	Rate	Occupancy
8th	West	13,281	\$56.00-\$60.00/FS	Vacant

## For Leasing Information

JOHN MARVIN JONES  
202.513.6709  
jmjones@lpc.com

ADAM BIBERAJ  
202.513.6736  
abiberaj@lpc.com

ELAINE CLANCY  
202.513.6721  
eclancy@lpc.com

LINCOLN  
PROPERTY  
COMPANY

FRANKLIN  
COURT

# Ninth Floor

1099 14th Street, NW  
Washington, DC 20005



Floor	Suite	Sq. Ft.	Rate	Occupancy
9th		40,583	\$58.00-\$62.00/FS	Vacant

FRANKLIN  
COURT

### For Leasing Information

JOHN MARVIN JONES  
202.513.6709  
jmjones@lpc.com

ADAM BIBERAJ  
202.513.6736  
abiberaj@lpc.com

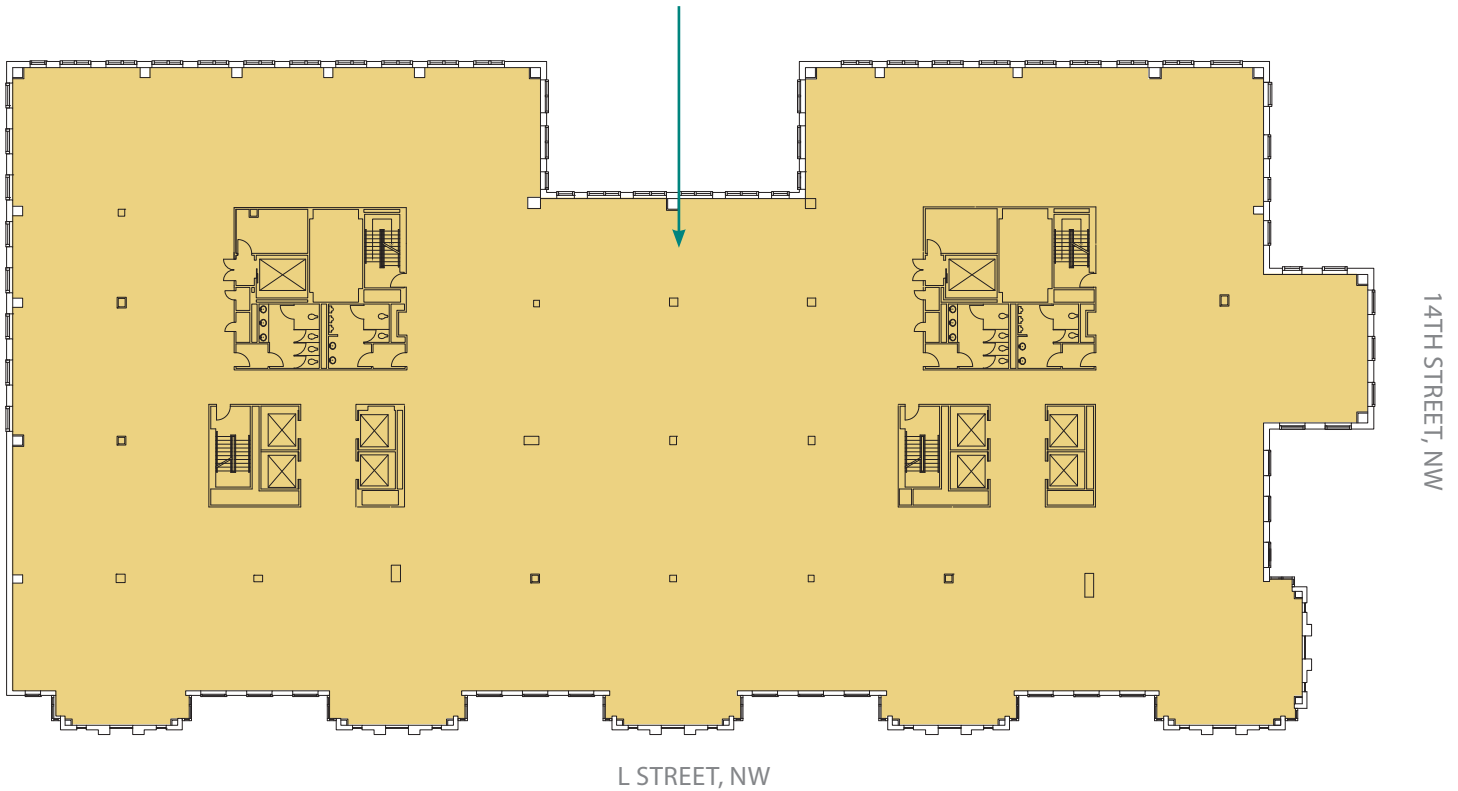
ELAINE CLANCY  
202.513.6721  
eclancy@lpc.com

LINCOLN  
PROPERTY  
COMPANY

# Tenth Floor

1099 14th Street, NW  
Washington, DC 20005

38,798 SF AVAILABLE:  
6/1/2019



Floor	Suite	Sq. Ft.	Rate	Occupancy
10th		38,798	Negotiable	Vacant

#### For Leasing Information

JOHN MARVIN JONES  
202.513.6709  
jmjones@lpc.com

ADAM BIBERAJ  
202.513.6736  
abiberaj@lpc.com

ELAINE CLANCY  
202.513.6721  
eclancy@lpc.com

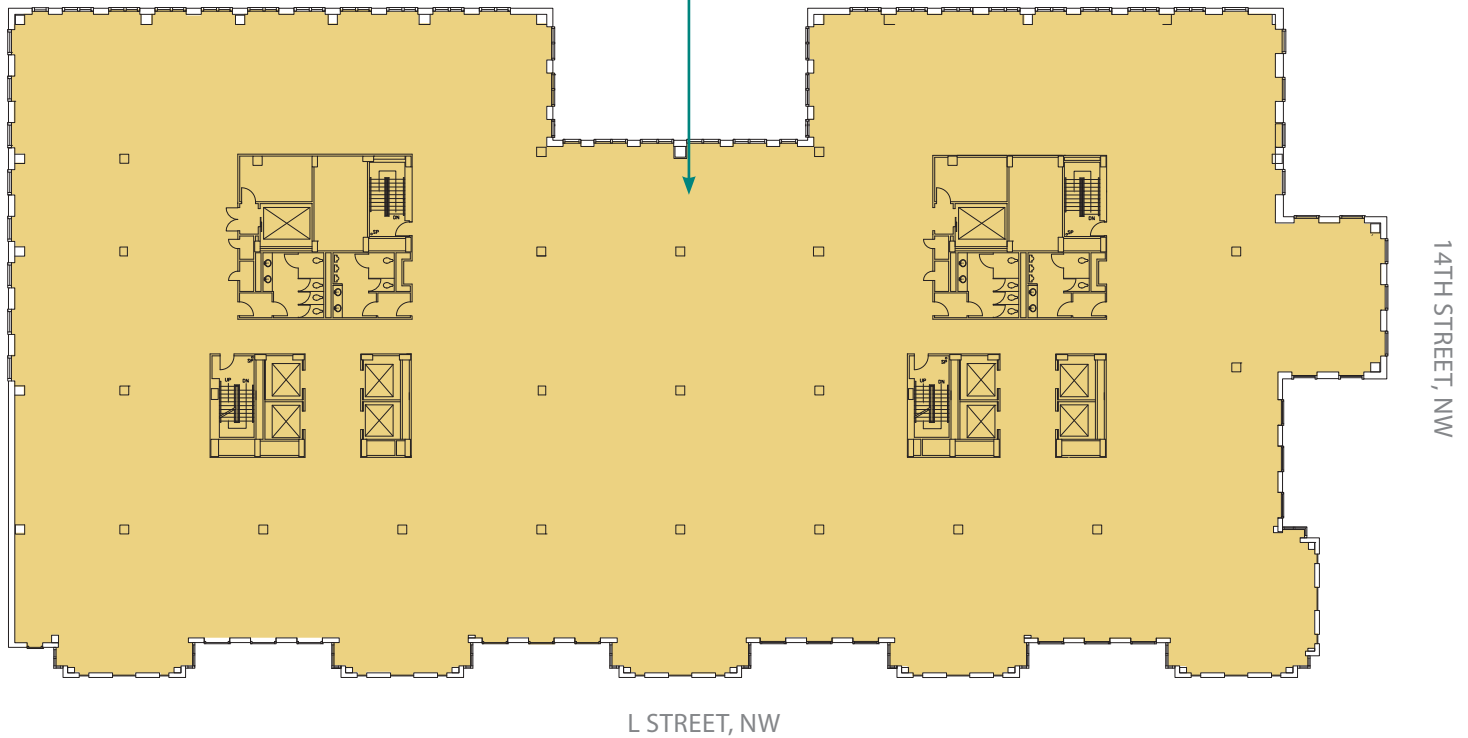
LINCOLN  
PROPERTY  
COMPANY

FRANKLIN  
COURT

# Eleventh Floor

1099 14th Street, NW  
Washington, DC 20005

38,487 SF AVAILABLE:  
6/1/2019



Floor	Suite	Sq. Ft.	Rate	Occupancy
11th		38,487	Negotiable	6/1/2019

#### For Leasing Information

JOHN MARVIN JONES  
202.513.6709  
jmjones@lpc.com

ADAM BIBERAJ  
202.513.6736  
abiberaj@lpc.com

ELAINE CLANCY  
202.513.6721  
eclancy@lpc.com

LINCOLN  
PROPERTY  
COMPANY

FRANKLIN  
COURT